

PORTLAND RISE, FINSBURY PARK N4

Bright and airy raised ground floor studio. Benefits include high ceilings, studio with large bay window, open to fitted kitchen, shower room, no upper chain. Viewing highly recommended.
Located near Finsbury Park, Victoria and Piccadilly line underground and Mainline station and Manor House, Piccadilly line underground station.
Excellent bus services and two Green Flag beautiful parks: Finsbury Park and Clissold Park.

£250,000



11 Blackstock Road, London N4 2JF Tel: 0207 354 8899
81 Stroud Green Road, London N4 3EG Tel: 0207 281 0129
info@michaelmorris.co.uk | <https://www.michaelmorris.co.uk>



28B Portland Rise, N4

Approximate Gross Internal Area = 27.6 sq m / 297 sq ft

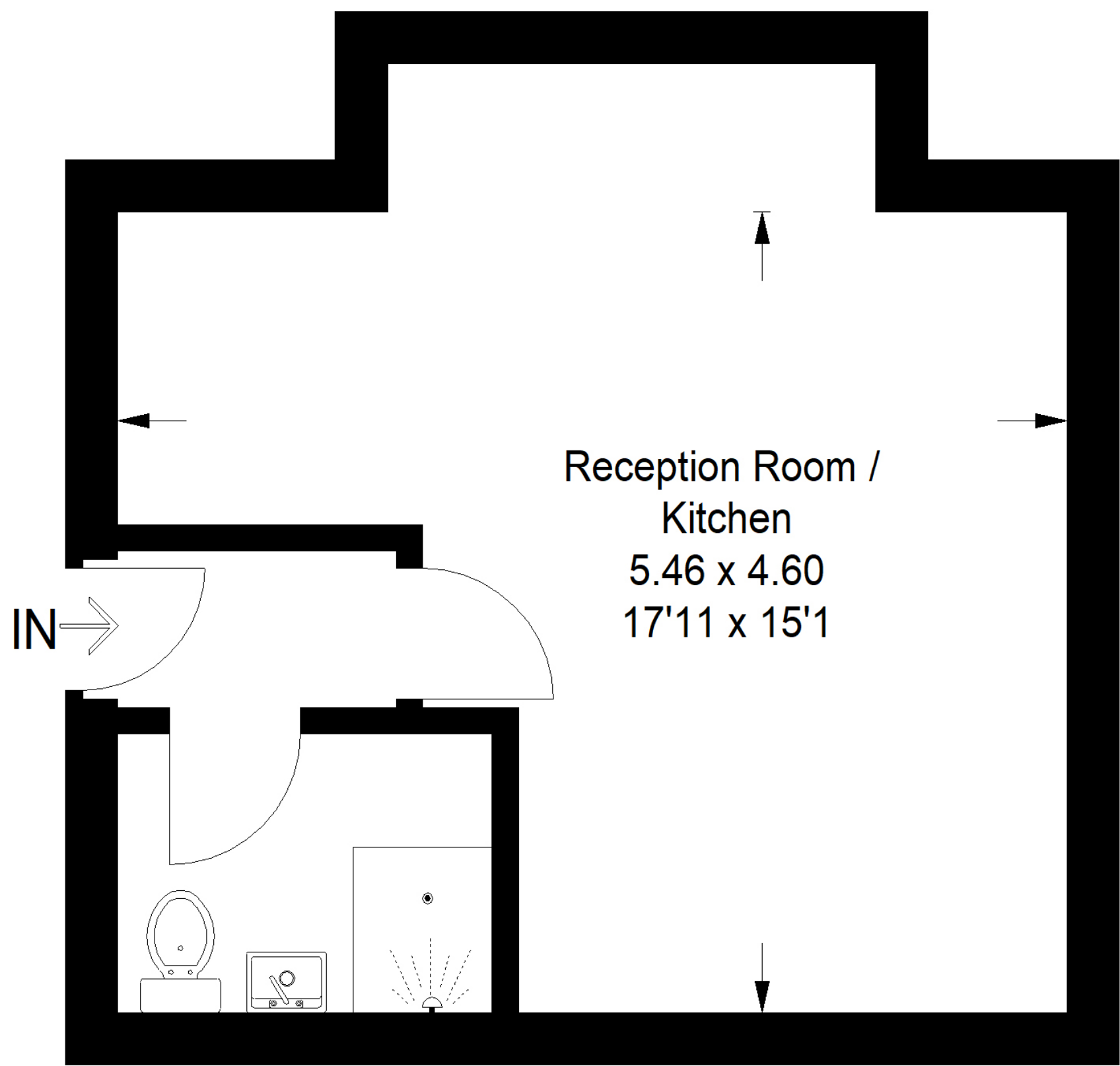


Illustration for identification purposes only, measurements are approximate, not to scale.
FloorplansUsketch.com © 2021 (ID802750)