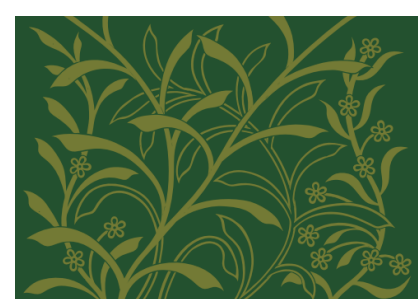
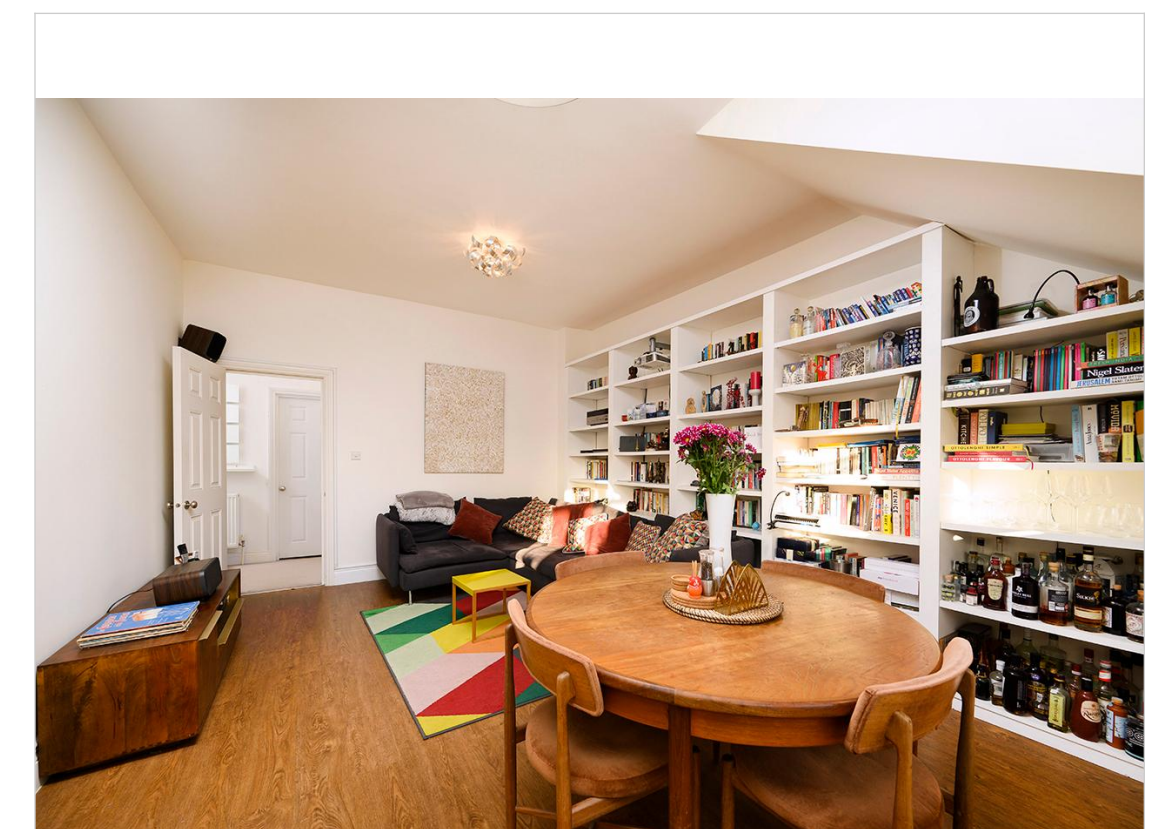
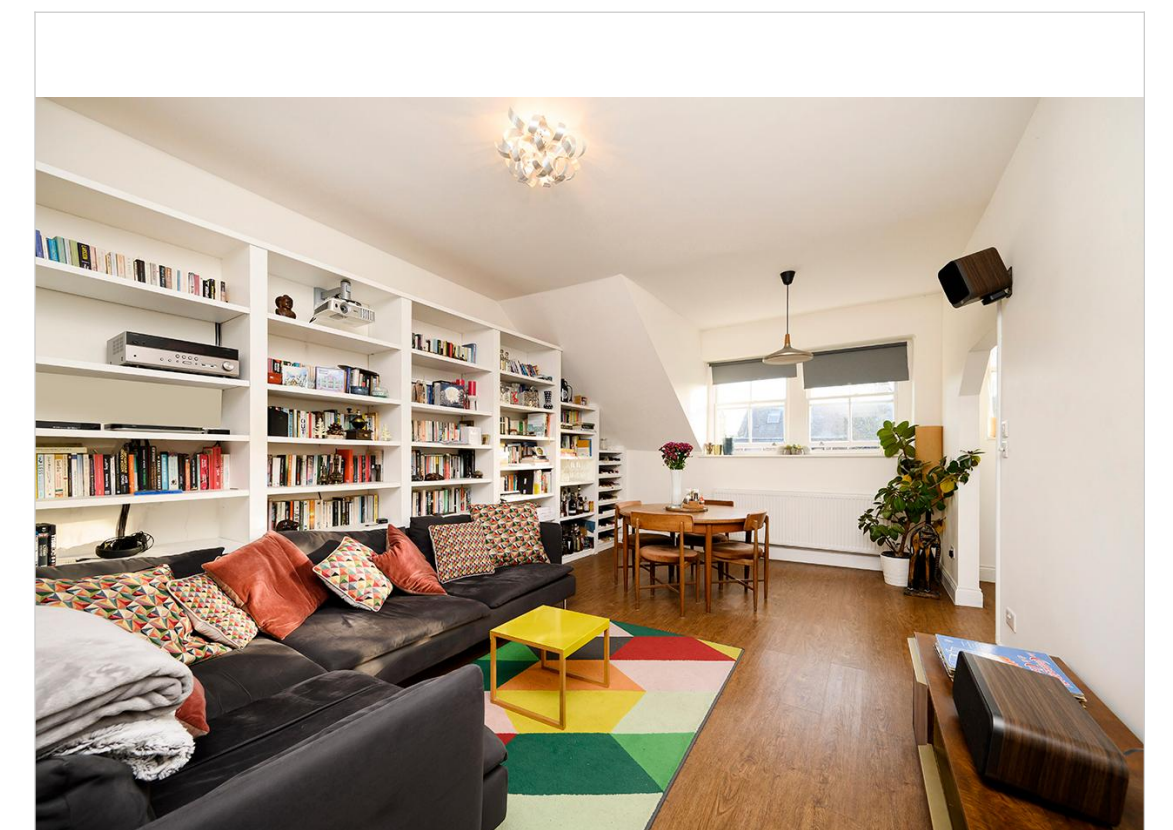


GLOUCESTER DRIVE, LONDON N4

Outstanding two bedroom top floor flat offered in excellent condition throughout. Benefits include large reception, modern fitted kitchen with quality appliances, good size main bedroom with fitted wardrobes, 2nd bedroom and luxury bathroom with shower cubicle. Additional benefits include your own internal staircase, cupboard housing quality washing machine and access to loft (conditions apply). Located within easy reach of Finsbury Park Victoria Line and Main Line Rail/Bus services and the Award Winning Finsbury Park itself.

£500 p/w

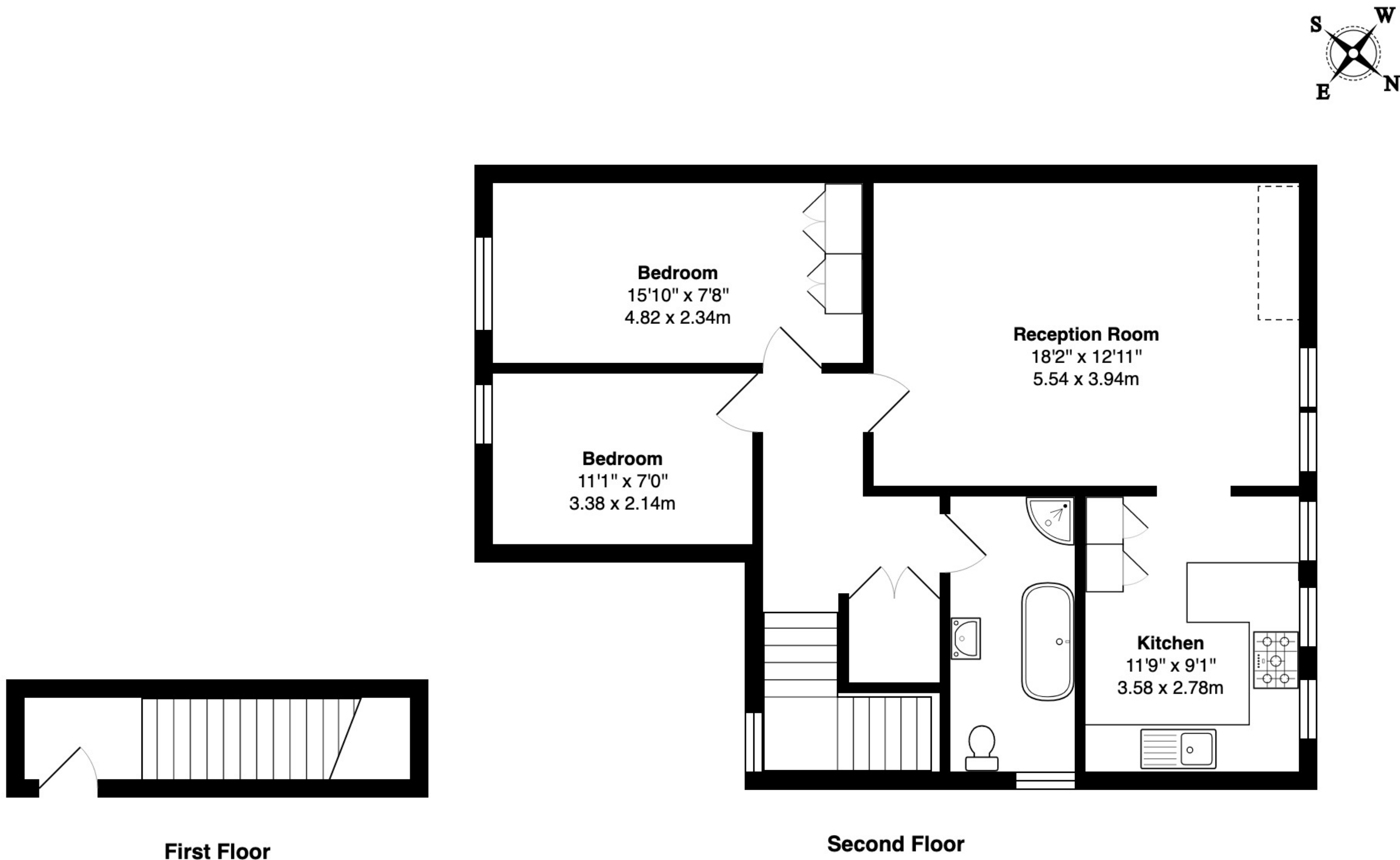


Michael Morris
Estate Agents

11 Blackstock Road, London N4 2JF Tel: 0207 354 8899
81 Stroud Green Road, London N4 3EG Tel: 0207 281 0129
info@michaelmorris.co.uk | <https://www.michaelmorris.co.uk>



GLOUCESTER DRIVE,
LONDON N4



Gloucester Drive N4

Total Gross Area: 811 ft² ... 75.3 m²

All measurements are approximate and for identification guideline purposes only, not to scale.
Compliant with the RICS code of measuring practice