

WATERSMEET PLACE, LONDON N4

Michael Morris are delighted to present this Two bed garden flat, perfect for a professional couple or young family. Situated by the West Reservoir, minutes from beautiful Clissold Park and Manor House tube, with great bus links to the City and Central London. Available to view from 5th Sept 2024.

The property consists of two good sized bedrooms, one with an ensuite and space for a desk and the other perfect as a guest room (wide enough for a double bed) or children's bedroom. There's also a family bathroom. The kitchen/living room has integrated appliances, breakfast bar and space for a small dining table; at the other end are full-width patio doors with direct access to the outside space.

Unusually for this location, the property has a spacious private garden with two patio areas, large enough for a barbecue and dining table - plenty of space for children to play while parents relax. The garden is peaceful, surrounded by trees, with the West Reservoir just the other side of the fence.

To one side of the property is a large, private space that would be ideal for construction of a home office or studio. It is accessed through a private entrance to the car park and there's a shed for bike storage.

The property comes with its own allocated car park space within the securely gated development.

It's located in a quiet development built in 2006, consisting of two blocks of flats and the property is in the rear block set away from the main road. The neighbours are mainly professionals and young families

£599,000 Leasehold



Michael Morris
Estate Agents

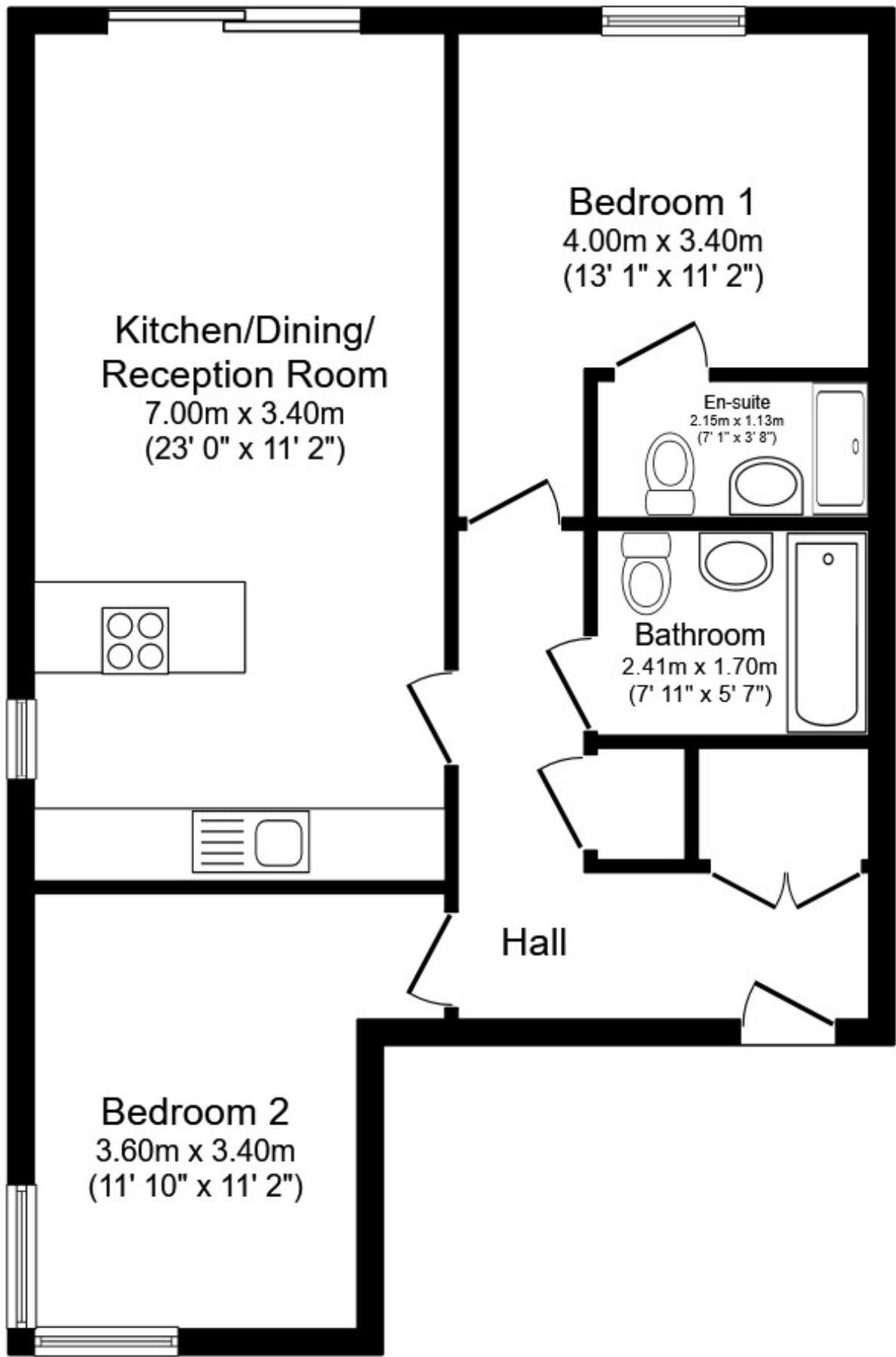
11 Blackstock Road, London N4 2JF Tel: 0207 354 8899
81 Stroud Green Road, London N4 3EG Tel: 0207 281 0129
info@michaelmorris.co.uk | <https://www.michaelmorris.co.uk>



WATERSMEET PLACE, LONDON N4

APPROX. GROSS INTERNAL FLOOR AREA 678.13
SQ FT 63.00 SQ METRES

Michael Morris are delighted to present this Two bed garden flat, perfect for a professional couple or young family. Situated by the West Reservoir, minutes from beautiful Clissold Park and Manor House tube, with great bus links to the City and Central London. Available to view from 5th Sept 2024.



Total floor area 63.0 sq.m. (678 sq.ft.) approx

This floor plan is for illustrative purposes only. It is not drawn to scale. Any measurements, floor areas (including any total floor area), openings and orientation are approximate. No details are guaranteed, they cannot be relied upon for any purpose and they do not form part of any agreement. No liability is taken for any error, omission or misstatement. A party must rely upon its own inspection(s). Powered by www.focalagent.com

Important Notice

Michael Morris, their clients and any joint agents give notice that:1: They are not authorised to make or give any representations or warranties in relation to the property either here or elsewhere,either on their own behalf or on behalf of their client or otherwise.They assume no responsibility for any statement that may be made in these particulars. These particulars do not form part of any offer or contract and must not be relied upon as statements or representations of fact. 2: Any areas, measurements or istances are approximate. The text, photographs and plans are for guidance only and are not necessarily comprehensive. It should not be assumed that the property has all necessary planning, building regulation or other consents and Michael Morris have not tested any services, equipment or facilities. Purchasers must satisfy themselves by inspection or otherwise.